

# ESAB LIP EQUIPMENT PRODUCTS CATALOGUE







As fabricators and fabricators' friends, we do some pretty epic work. And none of it would be possible without each and every one of us – the welders, the distributors, the engineers, the tools of the trade. Across the welding and fabrication world, the skills we have and the everyday work we do varies greatly, but our commitment to that work and to how fabrication moves the world forward is a constant that keeps us all reaching for more.

**SKYSCRAPERS.  
MUSCLE CARS.  
WIND TURBINES.  
OIL RIGS.  
GENERAL INDUSTRY.**

Together, **we shape the future** of welding and cutting.

## CONTENTS

### 01 LIP WELDING EQUIPMENT

|   |    |
|---|----|
| HandyArc 168i .....                         | 6  |
| HandyArc MIG 168i .....                     | 8  |
| Rogue ES 208iP .....                        | 10 |
| Rogue ET 208iP .....                        | 12 |
| Rogue EMP 208iP .....                       | 16 |
| Rogue ET 230iP AC/DC .....                  | 18 |
| Renegade ES 210i .....                      | 20 |
| Renegade ET 210iP / ET 210iP Advanced ..... | 22 |
| Renegade VOLT ES 200i .....                 | 24 |
| Rustler EM 215i/300i/455i .....             | 27 |

### 02 LIP CUTTING EQUIPMENT

|                      |    |
|----------------------|----|
| Cutmaster® 40+ ..... | 32 |
| Cutmaster® 70+ ..... | 34 |

## VISIT OUR WEBSITE FOR MORE INFORMATION ON:

- ARC WELDING EQUIPMENT
- FILLER METAL
- ROBOTS / WELDING AUTOMATION
- GOUGING EQUIPMENT
- ARC WELDING ACCESSORIES
- PLASMA CUTTING
- CUTTING AUTOMATION
- PERSONAL PROTECTIVE EQUIPMENT
- GAS CONTROL EQUIPMENT
- TD CUTTING AUTOMATION



## STAY CONNECTED



[esab.com](https://www.esab.com)



<https://www.facebook.com/esabasiapacific/>



<https://x.com/esabglobal/>



<https://www.linkedin.com/company/esabasiapacific/>



<https://www.youtube.com/c/esabwebglobal/>



<https://www.tiktok.com/@esabasiapacific/>



# // LIP WELDING EQUIPMENT







# HandyArc 168i

Portable and efficient



HandyArc 168i

The new HandyArc 168i welding power source revolutionizes the concept of portable machines. Featuring ESAB's high-tech inverter, it's ideal for blacksmiths and users who need to carry out minor repairs in and out of the workshop.

Wherever you go, the HandyArc 168i is easy to carry and weighs less than 3kg, giving you a whole new experience of portability.

- Practicality - Easy to carry with a shoulder strap and compact enough to fit in tool cabinets and motorcycle trunks.
- Easy-to-use panel - welding parameters can be adjusted according to the electrode diameter.
- Cost effectiveness - high efficiency and low energy consumption.
- Superior performance - excellent welding performance and easy arc striking when used with 6013 electrode.

Visit [esab.com](http://esab.com) for more information.

## Industry

- Blacksmith
- Hobbyist
- Minor Repair
- Welding School



## Specifications

|                                 |   |
|---------------------------------|---|
| Mains Voltage                   | 1 ph 220V +/- 10%   |
| Power Frequency                 | 50/60 Hz  |
| Current Range                   | 220 V, 15 - 160 A   |
| Welding Output MMA, 40°C        | 62 A / 22.5 V @100%<br>80 A / 23.2 V @ 60%<br>160 A / 26.4 V @15% |
| No-load peak voltage            | 80 V  |
| RMS Voltage                     | 49 V  |
| Maximum Input Effective Current | 14.3 A  |
| Maximum Input Current           | 37 A  |
| Dimensions L x W x H            | 262 x 114 x 180 mm  |
| Weight (power source only)      | 2.89 Kg   |
| Operating Temperature           | -10 ~ 40°C  |
| Certifications                  | GB/T 15579.1 & CCC  |
| Enclosure Class                 | IP21S   |

## Ordering Information

|               |          |
|---------------|----------|
| HandyArc 168i | 621156CN |
|---------------|----------|

*Delivery includes: HandyArc 168i welding machine / electrode holder/ ground clamp/ shoulder strap/ user instruction.*

## Options and accessories

|  |            |
|--|------------|
| Electrode Holder 200A, 16 mm <sup>2</sup> cable, OKC 25, 2.5 m | 0447996624 |
| Ground Clamp Kit, 16 mm <sup>2</sup> , OKC 25, 2 m             | 0447996625 |



# HandyArc MIG 168i

Portable inverter welding solution



HandyArc MIG 168i

## Industry

- Repair
- Light Industry
- Hobbyist

The HandyArc MIG 168i inverter welding power source is designed for MIG/MAG welding, flux cored wire and electrodes. Its lightweight and portable nature makes it ideal for field and shop maintenance work. The wire feeder supports 5 kg spools up to 0.9 mm in diameter.

The HandyArc MIG 168i is equipped with advanced QuickSet technology, providing users with quick and easy parameter configuration experience. Simply enter the plate thickness and wire diameter on the panel and the welding current and voltage can be automatically adjusted to meet your specific application needs.

- QuickSet: automatically adjust the current and voltage.
- Suitable for welding mild steel and stainless steel base materials.
- Excellent flux-cored wire welding performance.
- The machine is equipped with thermal protection function to prevent damage from overheating.
- Digital current/voltage display: shows the welding current and voltage values.
- Real-time display of welding current once the welding has started.
- Robust and easy to move on site.

Visit [esab.com](https://www.esab.com) for more information.



## Specifications

|                                 |  |
|---------------------------------|--|
| Mains Voltage                   | 220 V $\pm$ 10 %, 1ph, 50/60 Hz  |
| Welding Output MIG/MAG, 40°C    | 160 A / 22 V @ 15% duty cycle<br>80 A / 18 V @ 60% duty cycle<br>62 A / 17.1 V @ 100% duty cycle     |
| Welding Output MMA, 40°C        | 140 A / 25.6 V @ 15% duty cycle<br>70 A / 22.8 V @ 60% duty cycle<br>54 A / 22.2 V @ 100% duty cycle |
| Current Range MIG/MAG           | 30 - 160 A   |
| Current Range MMA               | 10 - 140 A   |
| Maximum Input Current           | 27 A   |
| Maximum Input Effective Current | 12.1A  |
| Open Circuit Voltage            | 82 VDC (<35 with VRD activated)  |
| Rated KVA                       | 9.0 kVA  |
| Enclosure Class                 | IP21S  |
| Operating Temperature           | -10 ~ +40 °C   |
| Dimensions L x W x H            | 439 x 206 x 308 mm   |
| Certifications                  | GB/T 15579.1 & CCC   |
| Weight                          | 10.2 kg  |

## Ordering Information

|                   |              |
|-------------------|--------------|
| HandyArc MIG 168i | 0700734010CN |
|-------------------|--------------|

*Delivery includes: power source, MIG gun 3 m, work lead 2 m with clamp, cored wire feed roller 0.8/0.9mm groove (fitted) and feed roller 0.6/0.8 mm V groove, contact tip 0.6 & 0.8 (fitted) & 0.9 mm, shoulder strap, and user instruction.*

## Options and accessories

|  |            |
|--|------------|
| Electrode Holder 200A, 16 mm <sup>2</sup> cable, OKC 25, 2.5 m | 0447996624 |
| Ground Clamp Kit, 16 mm <sup>2</sup> , OKC 25, 2 m             | 0447996625 |
| MIG Gun Euro Connector 3 m (MIG 15)                            | 0447996626 |
| Contact Tip 0.6 mm (MIG 15)                                    | 0447996627 |
| Contact Tip 0.8 mm (MIG 15)                                    | 0447996628 |
| Contact Tip 0.9 mm (MIG 15)                                    | 0447996629 |
| Feed Roller, $\Phi$ 0.6-0.8 mm V (5KGSSJ-C)                    | 0447996630 |
| Feed Roller, $\Phi$ 0.8-0.9 mm VK (5KGSSJ-C)                   | 0447996631 |
| Nozzle (MIG 15)  | 0447996632 |

# Rogue ES 208iP

More than just the basics



Rogue ES 208iP

## Industry

- Workshop
- Steelworks
- Construction
- General Manufacturing
- Minor Maintenance
- Outdoor Work



Control panel with bright display

The ESAB Rogue ES 208iP welding power source has become the new star of ESAB Rogue family with its unique modern design, extremely robust construction and advanced technology.

The Rogue ES 208iP welding power source is suitable for a wide range of welding jobs. It delivers outstanding performance whether outdoors, in the workshop, or in the factory. Like all other ESAB equipment, the Rogue ES 208iP power source adheres to strict quality standards and global standards.

- 220V single-phase welding power source
  - Bright digital display easy to read even from a distance with glove-friendly adjustment knob
  - Tested and certified according to most stringent global quality standards: shock test, drop test, duty cycle test, durability test, extreme high and low temperature test to ensure a longer equipment lifetime
  - The panel is made of special composite materials with fall resistance and fire retardant properties
  - Ergonomic, ultra-wear-resistant handles for greater mobility and comfort as well as safety
  - Suitable for all electrodes up to 4 mm in diameter, including the cellulose electrodes E6010/E6011 (OK PipeWeld 6010 and OK 22.45) and E7018 (OK 48.04), with an easy-to-start, consistent and soft arc for excellent welding performance
  - TIG welding with LiftArc technology for smooth arc striking, suitable for thin plate welding
  - Adjustable Hot Start – facilitates arc striking and prevent the electrodes from sticking to the workpiece
  - Adjustable Arc Force – automatically adjusts arc stability to ensure a stable welding process
  - Features MMA and TIG pulse function for thin plate and vertical down welding. The MMA pulse function improves slag removal while reducing spatter, and delivers a quality weld appearance
- Visit [esab.com](http://esab.com) for more information.



## Specifications

|                                 |  |
|---------------------------------|--|
| Mains Voltage                   | 1 $\Phi$ 220 V +/- 10%   |
| Power Frequency                 | 50/60 Hz   |
| Output Current                  | 200 A  |
| Current Range                   | SMAW: 20 A / 20.8 V - 200 A / 28 V<br>GTAW: 10 A / 10.4 V - 200 A / 18 V |
| Welding Output MMA (SMAW), 40°C | 200 A @ 25%, 28 V<br>129 A @ 60%, 25.2 V<br>100 A @ 100%, 24 V           |
| Welding Output TIG (GTAW), 40°C | 200 A @ 25%, 18 V<br>129 A @ 60%, 15.2 V<br>100 A @ 100%, 14 V           |
| No-load Voltage                 | 63 V (< 25 V when VRD activated)   |
| Maximum Input Effective Current | 23 A   |
| Maximum Input Current           | 45 A   |
| Dimensions L x W x H            | 403 x 153 x 300 mm   |
| Weight                          | 8.1 kg   |
| Operating Temperature           | -10 ~ 40°C   |
| Certifications                  | GB/T 15579.1 & CCC   |
| Enclosure Class                 | IP23S  |

## Ordering Information

|                |            |
|----------------|------------|
| Rogue ES 208iP | 0705002004 |
|----------------|------------|

*Delivery includes: welding power source, electrode holder with 3m welding cable, grounding clamp with 3m welding cable, and shoulder strap.*

## Options & Accessories

|   |            |
|---|------------|
| Electrode holder Tweco 200A, 16 mm <sup>2</sup> cable, 3 m, OKC50 | 0700401424 |
| Grounding clamp cable set, OKC50, 16 mm <sup>2</sup> , 3 m        | 0447997930 |
| SR-B 17V gas-cooled torch, OKC 50, 4 m                            | 0700025514 |
| SR-B 17V gas-cooled torch, OKC 50, 8 m                            | 0700025515 |
| SR-B 26V gas-cooled torch, OKC 50, 4 m                            | 0700025522 |
| SR-B 26V gas-cooled torch, OKC 50, 8 m                            | 0700025523 |

# Rogue ET 208iP

Redefine the concepts of DC TIG welding



Rogue ET 208iP



## Industry

- Food & Beverage
- Repair and Maintenance
- General
- Manufacturing
- Refrigeration
- Automotive Industry



Control panel with bright display



Torch with current control

Rugged and durable with unprecedented performance, the Rogue ET 208iP power source delivers exceptional arc characteristics, whether in TIG HF, Lift TIG or MMA mode.

Ready for any job, anywhere, this equipment has been designed to withstand the toughest conditions, delivering a perfect result every time.

Compact, durable and having been tested under the toughest conditions, it has all the features needed for top-quality DC TIG welding: pre and post gas flow, start current, slope up and slope down, final current and 2T or 4T modes.

Rogue ET 208iP also has a pulsed function with a frequency of 0.2 Hz to 500 Hz for precise heat input control.

In MMA mode, the operator can adjust hot start and arc force separately, and it also supports MMA pulse function with optional settings specifically for E6010/6011 cellulosic electrodes.

All of these functions are adjusted via a simple and intuitive panel.

- **Excellent high - frequency arc striking** ensures no failure or contamination of the workpiece and tungsten electrode, delivering superior arc characteristics and stable performance.
  - **Pulse frequency up to 500 Hz** for unparalleled heat input control, incredible for welding very thin stainless steel sheets.
  - **Easy to use** - Simple and intuitive parameter setting, even when using advanced functions.
  - **Advanced TIG Controls** - Precise control from start to finish for optimum results in any application.
  - **Robust IP23S design** - designed for both factory and field applications with special impact and flame resistant compounds.
  - **Ready to use** - TIG torch with current control, work clamp, hose and starter kit of consumables.
- Visit [esab.com](http://esab.com) for more information.

## Specifications

|                                 |   |
|---------------------------------|---|
| Mains Voltage / Frequency       | 1Ø 220 V +/- 10%, 50/60 Hz  |
| Max. Output Current             | 200 A   |
| Idle Power                      | 30 W  |
| No-load Voltage                 | 63 V (< 25 V when VRD activated)                                      |
| Welding Output MMA (SMAW), 40°C | 200 A / 28.0 V @ 25%<br>129 A / 25.2 V @ 60%<br>100 A / 24.0 V @ 100% |
| Welding Output TIG (GTAW), 40°C | 200 A / 18.0 V @ 25%<br>129 A / 15.2 V @ 60%<br>100 A / 14.0 V @ 100% |
| Welding Output MMA              | 20 A / 20.8 V<br>200 A / 28 V   |
| Current Range                   | 10 - 200 A  |
| Maximum Input Effective Current | 23 A  |
| Maximum Input Current           | 45 A  |
| Operating Temperature           | -10 ~ +40°C   |
| Enclosure Class                 | IP23S   |
| Certifications                  | GB/T 15579.1 & CCC  |
| Dimensions L x W x H            | 403 x 153 x 264 mm  |
| Weight                          | 8.8Kg   |

## Ordering Information

|                |            |
|----------------|------------|
| Rogue ET 208iP | 0705002005 |
|----------------|------------|

Delivery includes: welding power source (with 3m input cable), SR-26F TIG torch kit (4m) with remote control and flexible neck (including 2 sets of torch consumables – 1.6 and 2.4mm), grounding clamp with 3m welding cable, 4m gas hose, 2\* hose clamps, and shoulder strap.

## Options & Accessories

|  |            |
|--|------------|
| Electrode holder TWECO 200A, OKC50, 16 mm <sup>2</sup> cable, 3m | 0700401424 |
| Grounding clamp cable set, OKC50, 16 mm <sup>2</sup> , 3 m       | 0447997930 |
| TIG SR-26F torch kit with remote control and flexible neck, 4m   | 0464691002 |

See the next page for a complete list of consumables for the torch TIG SR-26F.



# SR-26 Consumables



SR-26 torch nozzle, collet, collet body and Jumbo nozzle.

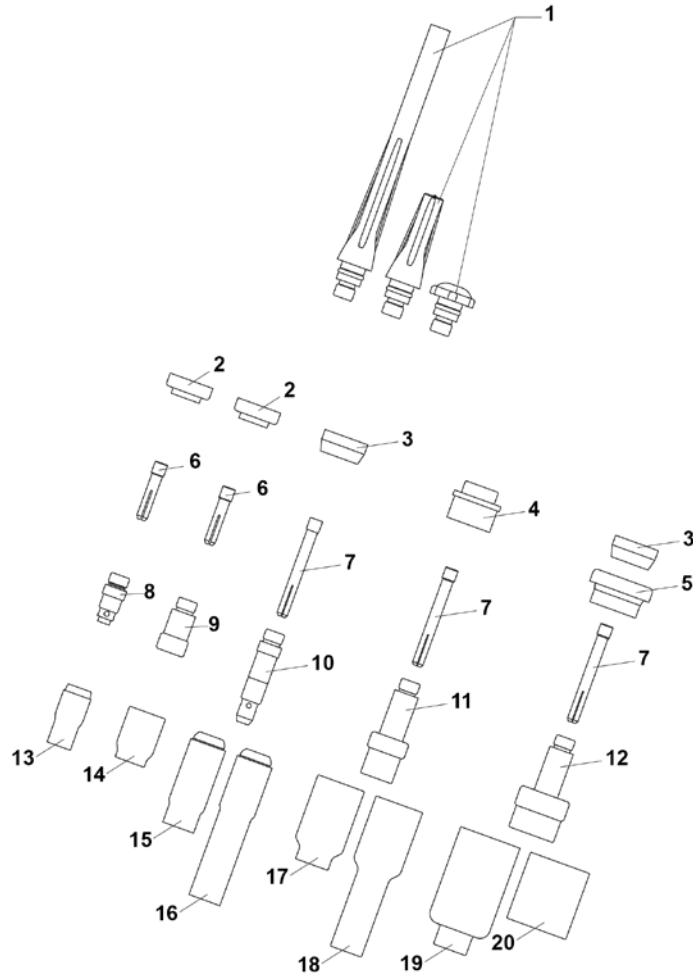
| Ordering Information SR-26 |           |                                  |             |
|----------------------------|-----------|----------------------------------|-------------|
| No.                        | Size      | Description                      | Part Number |
| 1                          | Long      | Back cap                         | 0157123029  |
|                            | Medium    |                                  | 0588000591  |
|                            | Short     |                                  | 0157123028  |
| 2                          |           | Heat shield small                | 0700025680  |
| 3                          |           | Heat shield                      | 0366960016  |
| 4                          |           | Heat shield gas lens             | 0366960020  |
| 5                          |           | Heat shield large gas lens       | 0366960021  |
| 6                          | Ø 1.0     | Collet standard short            | 0349501216  |
|                            | Ø 1.6     |                                  | 0349501217  |
|                            | Ø 2.4     |                                  | 0349501218  |
|                            | Ø 3.2     |                                  | 0349501219  |
| 7                          | Ø 0.5     | Collet standard                  | 0157123009  |
|                            | Ø 1.0     |                                  | 0157123010  |
|                            | Ø 1.6     |                                  | 0157123011  |
|                            | Ø 2.0     |                                  | 0700025681  |
|                            | Ø 2.4     |                                  | 0157123012  |
|                            | Ø 3.0     |                                  | 0700025682  |
|                            | Ø 3.2     |                                  | 0157123013  |
|                            | Ø 4.0     |                                  | 0157123014  |
| 8                          | Ø 1.0-1.6 | Collet body short                | 0700025683  |
|                            | Ø 2.0-2.4 |                                  | 0700025684  |
|                            | Ø 3.0-3.2 |                                  | 0700025685  |
| 9                          | Ø 1.0-1.6 | Collet body with gas lens, short | 0700025686  |
|                            | Ø 2.4     |                                  | 0700025687  |
|                            | Ø 3.2     |                                  | 0700025688  |
| 10                         | Ø 0.5-1.6 | Collet body standard             | 0157123016  |
|                            | Ø 2.0-2.4 |                                  | 0157123017  |
|                            | Ø 3.0-3.2 |                                  | 0157123018  |
|                            | Ø 4.0     |                                  | 0157123019  |
| 11                         | Ø 1.0     | Collet body with gas lens        | 0157123021  |
|                            | Ø 1.6     |                                  | 0157123022  |
|                            | Ø 2.0-2.4 |                                  | 0157123023  |
|                            | Ø 3.0-3.2 |                                  | 0157123024  |
|                            | Ø 4.0     |                                  | 0157123025  |
| 12                         | Ø 1.0     | Collet body with jumbo gas lens  | 0157123083  |
|                            | Ø 1.6     |                                  | 0157123084  |
|                            | Ø 2.0-2.4 |                                  | 0157123085  |
|                            | Ø 3.0-3.2 |                                  | 0157123086  |
|                            | Ø 4.0     |                                  | 0588000087  |

| 订购信息 SR-26 |                |                                |            |
|------------|----------------|--------------------------------|------------|
| 编号         | 尺寸             | 描述                             | 料号         |
| 13         | Ø 6.4 (No.4)   | Gas nozzle                     | 0365310044 |
|            | Ø 8.0 (No.5)   | L=30 mm                        | 0365310045 |
|            | Ø 9.8 (No.6)   |                                | 0365310046 |
|            | Ø 11.2 (No.7)  |                                | 0365310047 |
|            | Ø 12.7 (No.8)  |                                | 0365310048 |
|            | Ø 15.9 (No.10) |                                | 0588000440 |
| 14         | Ø 6.4 (No.4)   | Gas nozzle for gas lens, short | 0157121032 |
|            | Ø 8.0 (No.5)   |                                | 0157121033 |
|            | Ø 9.8 (No.6)   | L=25.5 mm                      | 0157121034 |
|            | Ø 11.2 (No.7)  |                                | 0157121039 |
|            | Ø 12.7 (No.8)  |                                | 0157121040 |
| 15         | Ø 6.4 (No.4)   | Gas nozzle standard            | 0157123052 |
|            | Ø 8.0 (No.5)   | L=47 mm                        | 0157123053 |
|            | Ø 9.8 (No.6)   |                                | 0157123054 |
|            | Ø 11.2 (No.7)  |                                | 0157123055 |
|            | Ø 12.7 (No.8)  |                                | 0157123056 |
|            | Ø 15.9 (No.10) |                                | 0588000442 |
| 16         | Ø 6.4 (No.4)   | Gas nozzle standard            | 0700025689 |
|            | Ø 8.0 (No.5)   | L=76 mm                        | 0700025690 |
|            | Ø 9.8 (No.6)   |                                | 0700025691 |
|            | Ø 11.2 (No.7)  |                                | 0700025692 |
| 17         | Ø 6.4 (No.4)   | Gas nozzle for gas lens        | 0157123057 |
|            | Ø 8.0 (No.5)   |                                | 0157123058 |
|            | Ø 9.8 (No.6)   | L=42 mm                        | 0157123059 |
|            | Ø 11.2 (No.7)  |                                | 0157123060 |
|            | Ø 12.7 (No.8)  |                                | 0157123061 |
|            | Ø 17.5         |                                | 0588000439 |
| 18         | Ø 6.4 (No.4)   | Gas nozzle for gas lens        | 0700025693 |
|            | Ø 8.0 (No.5)   |                                | 0700025694 |
|            | Ø 9.8 (No.6)   | L=76 mm                        | 0700025695 |
|            | Ø 11.2 (No.7)  |                                | 0700025696 |
|            | Ø 12.7 (No.8)  |                                | 0700025697 |
| 19         | Ø 9.8 (No.6)   | Gas nozzle for gas lens, large | 0157123088 |
|            | Ø 12.5 (No.8)  |                                | 0157123089 |
|            | Ø 15.9 (No.10) | L=48mm                         | 0588000438 |
|            | Ø 19 (No.12)   |                                | 0157123098 |
|            | Ø 24           |                                | 0588000437 |
| 20         | Ø 24           | Gas nozzle for gas lens, short | 0700025679 |
|            |                | L=34 mm                        |            |

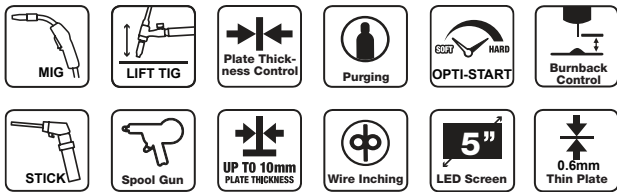
# SR-26 Consumables



SR-26 torch nozzle, collet, collet body and Jumbo nozzle.



# Rogue EMP 208iP



The Rogue EMP 208iP is the machine for the welding enthusiast, tradesperson or professional who need to fabricate and weld light structures that require TIG-Like welds on Aluminum, Stainless Steel, Bronze or Steel projects, but need the welding speed and ease-of-use of the MIG Process. It is suitable for use at maintenance departments, farm/home workshops, jobsites and marine repair /service centers without compromising on price for excellent results!

With the avid welder in mind, ESAB have introduced “Opti-Start”, a feature that allows the user to customize their arc starting characteristics through Soft and Hard Start controls.

## Easy to set for professional results

- QuickSet Plate Thickness Settings, allow simple set-up in a flash.
- Aluminum Pulse MIG Welding delivers excellent thin metal welding results that can be customized to allow adjustable ripple spacing (dimes) to achieve MIG-Welds that look like TIG-Welds.
- You can weld most metals including Mild Steel, Stainless Steel, Aluminum and Bronze.
- Fine tuning of Pre-Set Wire Speed & Volts / Full control over manual settings
- Recommended MIG & TIG welding thickness range: 0.6 mm – 12 mm
- Recommended STICK welding thickness range: 1.6 mm – 16 mm
- Spool Gun compatible, great for Aluminum welding (spool gun sold separately)
- Welding wire size selection & metal/material selection
- Suitable for 100 mm and 200 mm diameter spools
- MIG Gasless and MIG Gas Shielded
- Factory settings reset feature

Visit [esab.com](http://esab.com) for more information.



## Specifications

|  |  |
|--|--|
| Mains Voltage  | 220 V $\pm$ 10%, 1 ph, 50/60 Hz  |
| Minimum Single-phase Generator Recommendation            | 12 kVA (at 0.8 power factor) @ max. current                                |
| Current Range (MMA)                                      | 10 - 195 A   |
| Current Range (TIG)                                      | 10 - 200 A   |
| Voltage Range (MIG)                                      | 10 - 27 V  |
| Welding Output MIG (GMAW) @ 40°C, 10 minutes             | 200 A @ 15% duty cycle<br>100 A @ 60% duty cycle<br>77 A @ 100% duty cycle |
| Welding Output TIG (GTAW) @ 40°C, 10 minutes             | 200 A @ 15% duty cycle<br>100 A @ 60% duty cycle<br>77 A @ 100% duty cycle |
| Welding Output STICK (MMAW) @ 40°C, 10 minutes           | 195 A @ 10% duty cycle<br>80 A @ 60% duty cycle<br>62 A @ 100% duty cycle  |
| Rated Open Circuit VDC in MIG Mode                       | 67 V   |
| Rated Open Circuit Voltage in STICK Mode (VRD activated) | <35 V  |
| Power Source Weight                                      | 15.5 kg  |
| Power Source Dimensions L x W x H                        | 590 x 220 x 385 mm   |
| Certifications   | GB/T 15579.1 & CCC   |
| Enclosure Class  | IP23S  |

## Ordering Information

|                 |            |
|-----------------|------------|
| Rogue EMP 208iP | W1400200CN |
|-----------------|------------|

Delivery includes: CMGBZ24E3 MIG gun (3 m - Euro quick connector, with aluminum liner, plus an additional spare steel liner for hard wire), work clamp (/w 3 m lead), 3 feed rollers: 0.8/0.9mm VK groove (for cored wire), 0.9/1.0mm U groove (for soft wire, fitted), 0.8/0.9mm V groove (for solid wire), yellow nylon inlet guide (for soft alloy wire) and spring steel inlet guide (for hard wire), and instruction manual.

## Options and accessories

|   |            |   |               |
|---|------------|---|---------------|
| Electrode Holder, Tweco 200A, OKC50, 16 mm <sup>2</sup> , 3 m | 0700401424 | Contact Tip 0.6 mm M6 L: 28 mm 10 pcs     | BZT6806       |
| Grounding clamp cable set, OKC50, 16 mm <sup>2</sup> , 3 m    | 0447997930 | Contact Tip 0.8 mm M6 L: 28 mm 10 pcs     | BZT6808       |
| MIG Gun CMGBZ24E3 Euro Connector 3 m                          | W52BR24E3  | Contact Tip 0.9 mm M6 L: 28 mm 10 pcs     | BZT6809       |
| Tweco SGT250 Spool Gun  | W4011250   | Contact Tip 1.0 mm M6 L: 28 mm 10 pcs     | BZT6810       |
| SR-B 17V Torch, Air, OKC 50, 4 m                              | 0700025514 | Contact Tip 1.2 mm M6 L: 28 mm 10 pcs     | BZT6812       |
| SR-B 17V Torch, Air, OKC 50, 8 m                              | 0700025515 | Contact Tip Holder, 2 pcs                 | BZH24M6       |
| SR-B 26V Torch, Air, OKC 50, 4 m                              | 0700025522 | Feed Roller, $\Phi$ 0.6-0.8 mm V groove   | FR302210V0608 |
| SR-B 26V Torch, Air, OKC 50, 8 m                              | 0700025523 | Feed Roller, $\Phi$ 0.8-0.9 mm V groove   | FR302210V0809 |
| TIG Foot Control, 7 m   | W4015825   | Feed Roller, $\Phi$ 1.0-1.2 mm V groove   | FR302210V1012 |
| Tapered Nozzle, $\Phi$ 10 mm, 2 pcs                           | BZN2410    | Feed Roller, $\Phi$ 0.8-0.9 mm VK groove  | FR302210K0809 |
| Conical Nozzle, $\Phi$ 13 mm, 2 pcs                           | BZN2413    | Feed Roller, $\Phi$ 0.8-0.9 mm U groove   | FR302210U0809 |
| Cylindrical Nozzle, $\Phi$ 17 mm, 2 pcs                       | BZN2417    | Feed Roller, $\Phi$ 1.0-1.2 mm U groove   | FR302210U1012 |
| Nylon Inlet Guide   | W7007384   | Wire Conduit (Steel) 0.6-0.9 mm, 5.1 m    | CML5K0609     |
| Spring Steel Inlet Guide                                      | W7007437   | Wire Conduit (Steel) 0.9-1.2 mm, 5.1 m    | CML5K0912     |
|   |            | Wire Conduit (Aluminum) 0.9-1.6 mm, 4.5 m | CML5K0916A    |

# Rogue ET 230iP AC/DC

Advanced features, delivered simply



The Rogue ET 230iP AC/DC is a superior, portable, professional AC/DC welding machine that provides a high-quality solution for welding jobs. It offers extended adjustable parameter options to excel at everyday aluminium, stainless steel and carbon steel welding, while being able to tackle a wide range of thicknesses including very thin plates. The 5 in. color display and new graphical user interface provide an intuitive, easy-to-adjust features that puts users in control of their welding parameters. Durable housing design combines robustness and functionality with multiple lift points for easy manoeuvrability in both workshop and field applications.

## Industry

- Light Fabrication
- Pipe Construction
- Repair
- Aerospace
- Industry & General Fabrication
- Chemical Industry

- Various AC waveforms (square, soft square, sinusoidal and triangle) for optimal energy transfer.
- DC pulse up to 200 Hz for increased control of heat input and weld pool.
- PFC circuit ensures a stable arc, even with extra-long input cables up to 100 m.
- Easy-to-use 5 in. TFT panel reduces operation time of the users
- Dual-current mode in 4T2 mode allows easy switching between two welding parameters (heat input) for better control of the heat input and the size of the weld pool
- Easy access to saved welding parameters by torch trigger
- Simple connection to the water tank with only a Torex 25 screwdriver
- 2Pin/8Pin interface, compatible with all ESAB TIG torches
- New Coolmini3 water tank option helps maintain equipment temperature

Visit [esab.com](https://www.esab.com) for more information.



*Optional remote control*

# Rogue ET 230iP AC/DC



## Specifications

|                          |   |   |
|--------------------------|---|---|
| Mains Voltage            | 115/220 VAC±15%, 1 PH, 50/60 Hz   |   |
| Rated KVA                | 3.3 KVA (115 VAC) 6 KVA (220 VAC)   |   |
| Energy Save Mode         | <30 W   |   |
| Welding Output MMA, 40°C | 115 VAC:<br>90A / 23.6V @ 30%<br>64A / 22.5V @ 60%<br>49.3A / 22V @ 100%          | 220 VAC:<br>180A / 27.2V @ 30%<br>127A / 25V @ 60%<br>99A / 23.9V @ 100%  |
| Welding Output TIG, 40°C | 115 VAC:<br>125A / 15V @ 30%<br>88.4A / 13.5V @ 60%<br>68.5A / 12.7V @ 100%       | 220 VAC:<br>230A / 19.2V @ 30%<br>163A / 16.5V @ 60%<br>126A / 15V @ 100% |
| Setting Range MMA        | 115 VAC MMA: 10A / 20.4V – 90A / 23.6V<br>220 VAC MMA: 10A / 20.4V – 180A / 27.2V |   |
| Setting Range TIG DC     | 115 VAC TIG: 5A / 10.2V – 125A / 15V<br>220 VAC TIG: 5A / 10.2V – 230A / 19.2V    |   |
| Setting Range TIG AC     | 115 VAC TIG: 15A / 10.6V – 125A / 15V<br>220 VAC TIG: 15A / 10.6V – 230A / 19.2V  |   |
| Power Factor             | 0.99  |   |
| Open Circuit Voltage     | 68 VDC / 10VDC with VRD activated   |   |
| Enclosure Class          | IP23S   |   |
| Operating Temperature    | -10 to +40°C  |   |
| Dimensions L x W x H     | 460 x 210 x 380 mm  |   |
| Certifications           | GB/T 15579.1 & CCC  |   |
| Weight                   | 19 kg   |   |

## Ordering Information

|                      |            |
|----------------------|------------|
| Rogue ET 230iP AC/DC | A000100351 |
|----------------------|------------|

Delivery includes: Rogue ET 230iP ACDC: input power cable 3 m, work lead 3 m, and gas hose 4 m.

## Options and accessories

|   |            |                                     |            |
|---|------------|-------------------------------------|------------|
| MMA 4 Analogue Remote-Control incl. 10 m cable                | 0700500084 | Exeor TIG SR 17 Torch, Air , 4 m    | 0700026220 |
| Electrode Holder, Tweco 200A, OKC50, 16 mm <sup>2</sup> , 3 m | 0700401424 | Exeor TIG SR 17 Torch, Air , 8 m    | 0700026221 |
| Grounding clamp cable set, OKC50, 16 mm <sup>2</sup> , 3 m    | 0447997930 | Exeor TIG SR 17–R Torch, Air , 4 m  | 0700026234 |
| Foot Control, 4.5 m (15 ft) cable and 8–pin connector         | W4014450   | Exeor TIG SR 17–R Torch, Air , 8 m  | 0700026235 |
| Trolley 2–wheel   | 0460330881 | Exeor TIG SR 21 Torch, Water, 4 m   | 0700026290 |
| CoolMini 3 – water cooler                                     | 0448040880 | Exeor TIG SR 21 Torch, Water, 8 m   | 0700026291 |
| SR–B 26 Torch, Air, OKC 50, 4 m                               | 0700025518 | Exeor TIG SR 21–R Torch, Water, 4 m | 0700026294 |
| SR–B 26 Torch, Air, OKC 50, 8 m                               | 0700025519 | Exeor TIG SR 21–R Torch, Water, 8 m | 0700026295 |
| SR–B 20 Torch, Water, OKC 50, 4 m                             | 0700025534 |                                     |            |
| SR–B 20 Torch, Water, OKC 50, 8 m                             | 0700025535 |                                     |            |

# Renegade ES 210i

Ultimate durability in portable edition



Renegade ES 210i is a professional single-phase, MMA and Live TIG welding machine with ultra-rugged IP23 housing designed for use in demanding environments. Equipped with a high-quality carry strap with multiple lift points, Renegade ES 210i is ready to move with you when portability is required. Additionally, a built-in PFC circuit provides an uninterrupted power supply, even with long extension cables up to 100 m.

Renegade ES 210i has been designed to weld with a wide range of electrodes in superior weld quality, including 6010 cellulosic. Users can either easily set the parameters, or simply the existing welding parameters with the memory button.

## Industry

- Marine & Offshore Industry
- Civil Construction
- Pipe Construction
- Repair & Maintenance
- Heavy fabrication
- Industry & General Fabrication
- Mining
- Steel Erectors

- Ultra-rugged IP23 housing for indoor and outdoor use
- For professional MMA welding with electrodes up to 4 mm with a high output power
- PFC for stable arc even with extra-long mains cable up to 100 m
- A powerful voltage booster provides additional arc voltage for superior cellulosic weld performance
- Easy-to-read and quick-to-set panel, improves accuracy and reduces downtime
- Adjustable Hot Start and Arc Force for optimal arc adjustment
- 3 memory settings for easy access to existing welding parameters

Visit [esab.com](http://esab.com) for more information.



Optional remote control



Control panel

## Specifications

|                       |  |   |
|-----------------------|--|---|
| Mains Voltage         | 115/220 VAC $\pm$ 15%, 1ph, 50/60 Hz   |   |
| Rated KVA             | 3.3 KVA (115VAC), 6 KVA (220VAC)   |   |
| Energy Save Mode      | <30 W  |   |
| Welding Output MMA    | 115 VAC:<br>110A / 24.4V @ 25%<br>71A / 22.8V @ 60%<br>55A / 22.2V @ 100%        | 220 VAC:<br>180A / 27.2V @ 25%<br>135A / 25.4V @ 60%<br>105A / 24.2V @ 100% |
| Welding Output TIG    | 115 VAC:<br>140A / 15.6V @ 25%<br>90A / 13.6V @ 60%<br>70A / 12.8V @ 100%        | 220 VAC:<br>210A / 18.4V @ 25%<br>168A / 16.7V @ 60%<br>130A / 15.2V @ 100% |
| Setting Range MMA     | 115 VAC MMA: 5A / 20.2V - 110A / 24.4V<br>220 VAC MMA: 5A / 20.2V - 180A / 27.2V |   |
| Setting Range TIG     | 115 VAC TIG: 5A / 10.2V - 140A / 15.6V<br>220 VAC TIG: 5A / 10.2V - 210A / 18.4V |   |
| Power Factor          | 0.99   |   |
| Open Circuit Voltage  | 78 VDC   |   |
| Enclosure Class       | IP23   |   |
| Operating Temperature | -10 to +40 °C  |   |
| Dimensions            | 460 x 200 x 320 mm   |   |
| Weight                | 9.9 kg   |   |

## Ordering Information

|                  |            |
|------------------|------------|
| Renegade ES 210i | 0447700882 |
|------------------|------------|

*Delivery includes: power source, electrode holder cable 3 m, and work lead 3 m.*

## Options and accessories

|  |            |
|--|------------|
| MMA 4 Analogue Remote-Control incl. 10 m cable                     | 0700500084 |
| Electrode Holder, Handy 200 A with 25 mm <sup>2</sup> , 3 m, OKC50 | 0700006900 |
| Return cable kit, OKC 50, 3 m                                      | 0700006901 |
| Return cable kit, OKC 50, 5 m                                      | 0700006885 |
| TIG Foot Control, incl. 4.5 m cable and 8-pin connector            | W4014450   |
| Trolley 2-wheel for Renegade                                       | 0460330881 |
| Shoulder strap   | 0445197880 |
| SR-B 17V Torch, Air, OKC 50, 4 m                                   | 0700025514 |
| SR-B 17V Torch, Air, OKC 50, 8 m                                   | 0700025515 |
| SR-B 26V Torch, Air, OKC 50, 4 m                                   | 0700025522 |
| SR-B 26V Torch, Air, OKC 50, 8 m                                   | 0700025523 |



# Renegade ET 210iP

## Renegade ET 210iP Advanced

Ultimate durability in portable edition



*Renegade ET 210iP*



*Renegade ET 210iP Advanced*

Renegade ET is a professional single-phase, hot start TIG and MMA welding machine. It is designed with industrial-grade IP23 housing, made to stand strong, even in the most demanding environments.

This series of welding machines are lightweight and easy to transport and carry thanks to multiple lift points and a high-quality shoulder strap. They are ready to move with you.

Renegade ET models also have a built-in PFC circuit. Even if you're on a poor power network or using a long extension cable up to 100 m, you can still get consistent welding performance.

Renegade ET is simple to use, as well. It offers direct access to parameter settings and an intuitive, bright interface to easily read them, even from a distance. You can choose between a classic LED user interface or a new, color screen available in Advanced model.

- Ultra-rugged IP23 housing ideal for indoor and outdoor use in demanding environments.
- TIG pulse up to 999 Hz to increase control of heat input and weld pool.
- PFC circuit to ensure a stable arc, even with extra-long mains cables up to 100 m
- Easy-to-read and quick-to-set panel, reduces downtime and improves accuracy
- Dual-current mode trigger allows users to switch between two output current levels to control the heat input and the size of the weld pool
- 4.3 in. color screen provides a visual presentation of parameter adjustment (available in Advanced model)
- Easily handle multiple jobs by torch trigger (available in Advanced model)
- Modular system with tool-less connection to water cooler and trolley

### Industry

- |                              |                                  |
|------------------------------|----------------------------------|
| ■ Marine & Offshore Industry | ■ Heavy fabrication              |
| ■ Civil Construction         | ■ Industry & General Fabrication |
| ■ Pipe Construction          | ■ Mining                         |
| ■ Repair & Maintenance       | ■ Steel Erectors                 |

Visit [esab.com](http://esab.com) for more information.



*Optional remote control*

# Renegade ET 210iP

## Renegade ET 210iP Advanced



### Specifications

|                       |  |   |
|-----------------------|--|---|
| Mains Voltage         | 115/220 VAC $\pm$ 15%, 1ph, 50/60 Hz   |   |
| Rated KVA             | 3.3 KVA (115VAC), 6 KVA (220VAC)   |   |
| Energy Save Mode      | <30 W  |   |
| Welding Output MMA    | 115 VAC:<br>110A / 24.4V @ 25%<br>71A / 22.8V @ 60%<br>55A / 22.2V @ 100%        | 220 VAC:<br>180A / 27.2V @ 25%<br>135A / 25.4V @ 60%<br>105A / 24.2V @ 100% |
| Welding Output TIG    | 115 VAC:<br>140A / 15.6V @ 25%<br>90A / 13.6V @ 60%<br>70A / 12.8V @ 100%        | 220 VAC:<br>210A / 18.4V @ 25%<br>168A / 16.7V @ 60%<br>130A / 15.2V @ 100% |
| Setting Range MMA     | 115 VAC MMA: 5A / 20.2V - 110A / 24.4V<br>220 VAC MMA: 5A / 20.2V - 180A / 27.2V |   |
| Setting Range TIG     | 115 VAC TIG: 5A / 10.2V - 140A / 15.6V<br>220 VAC TIG: 5A / 10.2V - 210A / 18.4V |   |
| Power Factor          | 0.99   |   |
| Open Circuit Voltage  | 78 VDC   |   |
| Enclosure Class       | IP23   |   |
| Operating Temperature | -10 to +40 °C  |   |
| Dimensions            | 460 x 200 x 320 mm   |   |
| Weight                | 11 kg  |   |

### Ordering Information

|                            |            |
|----------------------------|------------|
| Renegade ET 210iP          | 0447700902 |
| Renegade ET 210iP Advanced | 0447750881 |

Delivery includes: power source, work lead 3 m, and gas hose 4.5 m.

### Options and accessories

|  |            |                                     |            |
|--|------------|-------------------------------------|------------|
| MMA 4 Analogue Remote-Control incl. 10 m cable                     | 0700500084 | Exeor TIG SR 17 Torch, Air , 4 m    | 0700026220 |
| Electrode Holder, Handy 200 A with 25 mm <sup>2</sup> , 3 m, OKC50 | 0700006900 | Exeor TIG SR 17 Torch, Air , 8 m    | 0700026221 |
| Return cable kit, OKC 50, 3 m                                      | 0700006901 | Exeor TIG SR 17-R Torch, Air , 4 m  | 0700026234 |
| Return cable kit, OKC 50, 5 m                                      | 0700006885 | Exeor TIG SR 17-R Torch, Air , 8 m  | 0700026235 |
| TIG Foot Control, incl. 4.5 m cable and 8-pin connector            | W4014450   | Exeor TIG SR 21 Torch, Water, 4 m   | 0700026290 |
| Trolley 2-wheel for Renegade                                       | 0460330881 | Exeor TIG SR 21 Torch, Water, 8 m   | 0700026291 |
| EC 1001 Cooler   | 0445045881 | Exeor TIG SR 21-R Torch, Water, 4 m | 0700026294 |
| Shoulder strap   | 0445197880 | Exeor TIG SR 21-R Torch, Water, 8 m | 0700026295 |
| SR-B 20 Torch, Water, OKC 50, 4 m                                  | 0700025534 | SR-B 26V Torch, Air, OKC 50, 4 m    | 0700025518 |
| SR-B 20 Torch, Water, OKC 50, 8 m                                  | 0700025535 | SR-B 26V Torch, Air, OKC 50, 8 m    | 0700025519 |

# Renegade VOLT ES 200i

Cordless, battery-powered welder



ESAB Renegade VOLT ES 200i is a portable, cordless battery powered, Stick (SMAW) and Live TIG (TIG) welder with the versatility to operate on battery, AC mains, or in hybrid / AMP+ mode.

This cordless welder runs on 6 Ah, 9 Ah, and 12 Ah DeWALT FlexVOLT batteries. The Renegade VOLT provides the power to burn up to 33 (E6013) electrodes on a single charge using four 12 Ah batteries, that are included in the package.\*

Volt is a highly portable and powerful unit perfect for mobile welders operating in remote, offsite, or hard-to-reach locations without easy access to AC mains power.

In hybrid / AMP+ mode, Volt supplements AC mains power with battery power to prevent nuisance trips on smaller breaker sizes (e.g., 10A, 16A) or to provide more output when welding on 120V input.

The Renegade VOLT features a rugged industrial design with durable, impact-resistant housing and multiple lift points for easy operation and transport in the field. The bright, intuitive colour-screen user interface is designed for outdoors use, even in direct sunlight and features a battery status display and remaining arc time calculator.

This powerful welder offers the highest arc quality with special features that include hot start, arc force, memory storage, and cellulosic mode (6010) to optimize performance based on application or user preference.

*\*based on standard operating conditions*

## 行业应用

- Repair and Maintenance
- Civil Construction
- Agriculture
- Food and Beverage
- Ship and Offshore Yards
- Railcars
- Power Generation
- Marine and Offshore
- Mining
- Transportation



- 200 A output on AC mains (220V)
- Up to 140 A output on battery power
- Includes (4) DeWALT FlexVOLT 18V/54V 12Ah batteries
- AMP+ hybrid mode for extra power
- Lightweight and portable battery powered welder
- Durable, impact-resistant housing
- Sun-friendly, intuitive user interface
- Memory storage for welding parameters

Visit [esab.com](https://www.esab.com) for more information.

# Renegade VOLT ES 200i



## Specifications

|   |  |  |
|---|--|--|
| Voltage   | 120 / 220 VAC $\pm$ 15%, 1ph, 50 / 60 Hz   |  |
| Fuse Slow   | 16 A   |  |
| Rated kVA   | 6.0 kVA @ 220 VAC<br>2.7 kVA @ 120 VAC   |  |
| Voltage Range   | 90 - 270 VAC   |  |
| Energy Save Mode  | < 30 W   |  |
| Welding Output, MMA (AC)                                | <b>120 VAC</b><br>110 A / 24.4 V @ 25 %<br>70 A / 22.8 V @ 60 %<br>55 A / 22.2 V @ 100 %                       | <b>220 VAC</b><br>200 A / 28.0 V @ 25 %<br>129 A / 25.2 V @ 60 %<br>100 A / 24.0 V @ 100 % |
| Welding Output, MMA (Battery Mode)                      | <b>80 V</b><br>140 A / 25.6 V @ 18 %<br>110 A / 24.4 V @ 25 %<br>80 A / 23.2 V @ 60 %<br>60 A / 22.4 V @ 100 % |  |
| Welding Output, MMA (Hybrid Mode) AMP+                  | <b>120 VAC</b><br>150 A / 26.0 V @ 25 %<br>90 A / 23.6 V @ 60 %<br>70 A / 22.8 V @ 100 %                       | <b>220 VAC</b><br>200 A / 28.0 V @ 25 %<br>129 A / 25.2 V @ 60 %<br>100 A / 24.0 V @ 100 % |
| Welding Output, TIG (AC)                                | <b>120 VAC</b><br>140 A / 15.6 V @ 25 %<br>90 A / 13.6 V @ 60 %<br>70 A / 12.8 V @ 100 %                       | <b>220 VAC</b><br>200 A / 18.0 V @ 25 %<br>129 A / 15.2 V @ 60 %<br>100 A / 14.0 V @ 100 % |
| Welding Output, TIG (Battery Mode)                      | <b>80 V</b><br>150 A / 16.0 V @ 18 %<br>115 A / 14.6 V @ 25 %<br>90 A / 13.6 V @ 60 %<br>70 A / 12.8 V @ 100 % |  |
| Welding Output, TIG (Hybrid Mode) AMP+                  | <b>120 VAC</b><br>180 A / 17.2 V @ 25 %<br>130 A / 15.2 V @ 60 %<br>100 A / 14.0 V @ 100 %                     | <b>220 VAC</b><br>200 A / 18.0 V @ 25 %<br>129 A / 15.2 V @ 60 %<br>100 A / 14.0 V @ 100 % |
| Setting Range, MMA                                      | <b>120 VAC</b><br>10A/20.4 - 110A / 24.4V  | <b>220 VAC</b><br>10A/20.4 - 200A / 28V  |
|   | <b>120 VAC (Hybrid Mode) AMP+</b><br>10 A / 20.4 - 150 A / 26 V  | <b>220 VAC (Hybrid Mode) AMP+</b><br>10 A / 20.4 - 200 A / 28 V                            |
|   | <b>80 V (Battery Mode)</b><br>10 A / 20.4 - 140 A / 25.6 V   |  |
| Setting Range, TIG                                      | <b>120 VAC</b><br>10 A / 10.4 - 140 A / 15.6 V   | <b>220 VAC</b><br>10 A / 10.4 - 200 A / 18 V   |
|   | <b>120 VAC (Hybrid Mode) AMP+</b><br>10A / 10.4 - 180 A / 17.2 V   | <b>220 VAC (Hybrid Mode) AMP+</b><br>10 A / 10.4 - 200 A / 18 V                            |
|   | <b>80 V (Battery Mode)</b><br>10 A / 10.4 - 150 A / 16 V   |  |
| Power Factor at Maximum Current                         | 0.99   |  |
| Open Circuit Voltage (OCV)                              | 78 VDC   |  |
| Operating Temperature                                   | -10 ~ +40 °C   |  |
| Protection Class  | IP23   |  |
| Certification Mark (Standards)                          | GB/T 15579.1 & CCC   |  |
| Dimensions L x W x H, without battery box               | 460 x 200 x 320 mm   |  |
| Dimensions L x W x H, with battery box                  | 480 x 220 x 485 mm   |  |
| Weight, power source and battery box                    | 17 kg  |  |
| Weight, power source, battery box and 4 battery packs * | 23 kg  |  |

\* Weight when using a DeWALT FlexVOLT 12 Ah Battery, weight may vary when using other FlexVOLT battery packs.

# Renegade VOLT ES 200i



## Electrode Consumption - Number of electrodes per charge

| Electrode Size // Type         | E6013 | E7018 | E6010 |
|--------------------------------|-------|-------|-------|
| 2.5 x 250 mm (3/32 x 9.8 in.)  | 33    | 26    | 31    |
| 2.5 x 350 mm (3/32 x 13.8 in.) | 22    | 17    | 21    |
| 3.2 x 350 mm (1/8 x 13.8 in.)  | 14    | 10.5  | 12    |

Consumption when using four (4) DeWALT FlexVOLT DCB612 12 Ah Batteries, consumption may vary when using other FlexVOLT battery packs or operating parameters

## Ordering Information

|                           |            |
|---------------------------|------------|
| Renegade VOLT ES 200i     | 0447996660 |
| Renegade VOLT Battery box | 0447900881 |

Delivery includes:

0447996660: Renegade VOLT ES 200i, electrode holder 3m (10 ft) cable and OKC 50, return cable 3m (10 ft) with clamp and OKC 50

0447900881: Detachable battery box

## Accessories

|   |            |
|---|------------|
| MMA 4 Analogue Remote-Control incl. 10 m cable                    | 0700500084 |
| Electrode Holder, TWECO 200A with 25 mm <sup>2</sup> , 3 m, OKC50 | 0700401423 |
| Grounding clamp cable set, OKC50, 25 mm <sup>2</sup> , 3 m        | 0447997931 |
| Shoulder strap  | 0445197880 |
| SR-B TIG Torch 17V, 4 m   | 0700025514 |

## Wear & Spare Parts

|                                       |            |
|---------------------------------------|------------|
| DeWALT FlexVOLT 6Ah Batteries DCB606  | 0447996673 |
| DeWALT FlexVOLT 9Ah Batteries DCB609  | 0447996674 |
| DeWALT FlexVOLT 12Ah Batteries DCB612 | 0447996675 |
| DeWALT FlexVOLT 4-Port Charger        | 0447997111 |
| Charger adapter plug                  | 0447997045 |

DeWALT FlexVOLT batteries could be purchased from any authorized DeWALT retailer.



# Rustler EM 215i/300i/455i

The name of MIG/MAG inverter revolution



Rustler EM 455i, EM 300i, EM 215i

With its unique modern design and every detail taken into account, the Rustler family was designed by a team of top engineers in the world. It is equipped with the latest inverter technology, offering low energy consumption and excellent weld excellent quality. The machines are optimized for welding the most diverse metals, with specific process for electrodes, solid and flux cored wires, carbon steel, stainless steel, aluminum and even MIG brazing.

For more demanding welders, in addition to specific functions for coated electrode applications including hot start, arc force and anti-stick, there are additional settings such as 2T or 4T welding, inductance, creep start, burnback, crater filling, pre and post gas flow, providing an optimized arc adjustment in MIG/MAG application.

- **3 versions available:** 215i for 1ph 220V network, 300i for 1ph 220V or 3ph 220V/380V network, and 455i for 3ph 220V, 380V or 440V network.
- **Easy to operate**, set up and weld, ideal for both experienced welders and beginners.
- **Intelligent design** with angled panel, large handles and large handles and protected panel.
- **Guaranteed robustness**, tested and approved by rigorous tests around the world.
- **Energy-saving inverter technology.**
- **Fan on demand**, providing cooling when needed, reducing energy consumption and the amount of dust entering the equipment.

Visit [esab.com](http://esab.com) for more information.

## Industry

- General Manufacturing
- Steel Constructions
- Repair & Maintenance
- Metalwork
- Agricultural Tools

# RUSTLER



# Rustler EM 215i/300i/455i



| Specifications               |  |   |  |
|------------------------------|--|---|--|
| Model                        | Rustler EM 215i  | Rustler EM 300i   | Rustler EM 455i  |
| Mains Voltage                | 220 VAC $\pm$ 10%, 1ph   | 380 VAC $\pm$ 10%, 3 ph<br>220 VAC $\pm$ 10%, 3 ph<br>220 VAC $\pm$ 10%, 1 ph | 440 VAC $\pm$ 10%, 3 ph<br>380 VAC $\pm$ 10%, 3 ph<br>220 VAC $\pm$ 10%, 3 ph  |
| Power Frequency              | 50 Hz / 60 Hz  |   |  |
| Current Range MIG/MAG        | 30-200 A   | 30-250 A  | 30-300 A (220 V)<br>30-420 A (440V/380 V)  |
| Welding Output MIG/MAG, 40°C | 200 A @ 20% / 24 V<br>116 A @ 60% / 19.8 V<br>90 A @ 100% / 18.5 V | 250 A @ 40% / 26.5 V<br>204 A @ 60% / 24.2 V<br>158 A @ 100% / 21.9 V         | <b>440 VAC / 380VAC:</b><br>420 A @ 40% / 35 V<br>343 A @ 60% / 31.2 V<br>266 A @ 100% / 27.3 V<br><b>220 VAC:</b><br>300 A @ 40% / 29 V<br>245 A @ 60% / 24.3 V<br>190 A @ 100% / 23.5 V  |
| No-load Voltage MIG/MAG      | 59 V   | 68 V (380 VAC)<br>78 V (220 VAC)  | 82 V (440 VAC)<br>72 V (380 VAC)<br>67 V (220 VAC)   |
| Current Range MMA            | 20-200 A   | 20-200 A  | 20-300 A (220 VAC)<br>20-350 A (440 V / 380 VAC)   |
| Welding Output MMA, 40°C     | 200 A @ 20% / 28 V<br>116 A @ 60% / 24.7 V<br>90 A @ 100% / 23.6 V | 200 A @ 40% / 28 V<br>163 A @ 60% / 26.5 V<br>126 A @ 100% / 25 V             | <b>440 VAC / 380 VAC:</b><br>350 A @ 40% / 34 V<br>286 A @ 60% / 31.4 V<br>222 A @ 100% / 28.9 V<br><b>220 VAC:</b><br>300 A @ 40% / 32 V<br>245 A @ 60% / 29.8 V<br>190 A @ 100% / 27.6 V |
| No-load Voltage MMA          | 59 V<br><15 V (VRD activated)                                      | 68 V (380 VAC)<br>78 V (220 VAC)<br><15 V (VRD activated)                     | <b>78 V (440 VAC)</b><br>68 V (380 VAC)<br>67 V (220 VAC)<br><15 V (VRD activated)   |
| Weight                       | 40 kg  | 47 kg   | 70 kg  |
| Recommended Generator        | 10 kW  | 20 kW   | 25 kW  |
| Enclosure Class              | IP23S  |   |  |
| Dimensions L x W x H         | 921 x 434 x 576 mm   | 946 x 450 x 716 mm  | 951 x 460 x 806 mm   |
| Certifications               | GB/T 15579.1 & CCC   |   |  |
| Operating Temperature        | -10 ~ +40°C  |   |  |
| Insulation Class             | F  |   |  |
| Application Class            | S  |   |  |

# Rustler EM 215i/300i/455i



## Ordering Information

|                 |           |
|-----------------|-----------|
| Rustler EM 215i | 0748504CN |
| Rustler EM 300i | 0748505CN |
| Rustler EM 455i | 0748506CN |

*Delivery includes:*

*Rustler EM 215i: welding power source, 2m work lead (with grounding clamp), gas hose 1.5m, feed rolls: 0.8/1.0mm V-groove (fitted), 0.8/1.0mm K-groove, hose clamps\*2, chain 0.4m, wheel kits, quick start guide, and user instruction.*

*Rustler EM 300i: welding power source, 2m work lead (with grounding clamp), gas hose 1.5m, feed rolls: 0.8/1.0mm V-groove (fitted), 0.8/1.0mm K-groove, hose clamps\*2, chain 0.4m, wheel kits, quick start guide, and user instruction.*

*Rustler EM 455i: welding power source, 3m work lead (with grounding clamp), gas hose 4m, feed rolls: 1.0/1.2mm V-groove\*2 (fitted), 1.0/1.2mm K-groove\*2, hose clamps\*2, chain 0.4m, wheel kits, quick start guide, and user instruction.*

## Options & Accessories (not included in the package)

|  |            |
|--|------------|
| <b>Rustler EM 215i</b>                                 | 0700401424 |
| MIG gas-cooled torch MXL 201, 3M Euro connector        | 0700025220 |
| MIG gas-cooled torch MXL 201, 4M Euro connector        | 0700025221 |
| Grounding clamp cable set 200A, OKC 50, 3m             | 0700006901 |
| Grounding clamp cable set 200A, OKC 50, 5m             | 0700006885 |
| <b>Rustler EM 300i</b>                                 |            |
| MIG gas-cooled torch MXL 271, 3M Euro connector        | 0700025230 |
| MIG gas-cooled torch MXL 271, 4M Euro connector        | 0700025231 |
| Grounding clamp cable set 300A, OKC 50, 3m             | 0700006903 |
| Grounding clamp cable set 300A, OKC 50, 5m             | 0700006889 |
| <b>Rustler EM 455i</b>                                 |            |
| MIG gas-cooled torch Exeor PSF 415, 3M, Euro connector | 0700026406 |
| MIG gas-cooled torch Exeor PSF 415, 4M, Euro connector | 0700026407 |
| MIG gas-cooled torch Exeor PSF 415, 5M, Euro connector | 0700026408 |
| Grounding clamp cable set 500A, OKC 50, 5m             | 0700006893 |

*Refer to fact sheet (XA00198820) for complete list of MXL series MIG torch consumables.*

*Refer to fact sheet (XA00300525) for complete list of Exeor PSF series MIG torch consumables.*

# // LIP CUTTING EQUIPMENT









# Cutmaster® 40+

Portable plasma cutting equipment



ESAB Cutmaster 40+ is the perfect combination of power and portability for hand-held plasma cutting machines. Plus means more, so we've added a user-friendly 4.3 in. TFT LCD screen and we've also upgraded the power of the machine to provide more control and flexibility so you can master any genuine cutting with ease to 12-25 mm. Together with the SL60 1Torch, it all adds up to the total plasma cutting package.

- Portable and durable with three handles and industrial housing for use in harsh environments
- Bright 4.3 in. TFT LCD display with glove-friendly adjustment knob simplifies use and provides greater control and flexibility
- Comes with industrial SL60 1Torch featuring 2T/4T function, safety trigger lock, and double-tap trigger to shut off the air and conserve bottled air
- Switch between normal and grid cutting modes
- Automatic air pressure detection and post-cut air purge to expand consumable life
- Duty cycle: 40% @ 40A; 100% @20A
- Cutmaster Black Series consumables included for up to 60% longer life

## Industry

- Industry & General Fabrication
- Light Fabrication
- Industrial Production & Manufacturing
- Automotive Bodies
- Hobbyist
- Agricultural Equipment
- HVAC
- Repair & Maintenance
- Pipeline
- Training Schools

Visit [esab.com](http://esab.com) for more information.



## Specifications

|   |  |
|---|--|
| Amperage Output                         | 10 - 40 A, continuously adjustable                                   |
| Recommended Generator Power             | 10 kW (or higher)  |
| Recommended Cut and Pierce Capacity     | 12 mm*   |
| Conventional Hand-held Cut Capacity     | 16 mm*   |
| Maximum Edge Cut Capacity               | 25 mm*   |
| Input Voltage                           | 220 VAC +/- 10%, 50/60 Hz, 1ph                                       |
| Rated Duty Cycle @ 40°C                 | 40% @ 40 A, 100% @ 20 A  |
| Power Factor at Maximum Cut Capacity    | 0.98   |
| Amperage Draw (at Maximum Cut Capacity) | 31 A   |
| Input Power Cable                       | 3 m, 2.5 mm <sup>2</sup> without plug                                |
| Work Lead (with Ground Clamp)           | 3 m, 10 mm <sup>2</sup> work cable with 25 mm <sup>2</sup> connector |
| Gas Requirement                         | Compressed air   |
| Operating Temperature Range             | -10°C to + 40°C  |
| Compressed Air Pressure Requirement     | 6.2 - 8.6 bar (90 - 125 psi) (0.62 - 0.86 Mpa)                       |
| Compressed Air Flow Requirement         | 142 - 235 l/min  |
| SL60 Torch Duty Cycle                   | 100% @ 60 A with 165 l/min air flow                                  |
| Torches - for use with Cutmaster 40+    | SL60 1Torch  |
| Enclosure Class                         | IP23S  |
| Certifications                          | GB/T 15579.1 & CCC   |
| Dimensions L x W x H                    | 465 x 200 x 315 mm   |
| Weight                                  | 11.5 kg  |

\*All cut capacity data contained herein is based on mild steel cuts.

## Ordering Information

|  |              |
|--|--------------|
| Cutmaster 40+ Package                        | 0559141004CN |
| <b>Torches</b>                               |              |
| SL60 1Torch and Lead 6.1 m (20 ft) 75° Head  | 7-5204       |
| SL60 1Torch and Lead 15.2 m (50 ft) 75° Head | 7-5205       |

Delivery includes: Cutmaster 40+ power source, SL60 75° torch and lead 5 m, work lead 3 m (with ground clamp), and consumables kit.

## Options and accessories

|                          |        |                             |            |
|--------------------------|--------|-----------------------------|------------|
| Cutting Guide Kit        | 7-7501 | Single Stage Air Filter Kit | 7-7507     |
| Circle Cutting Guide Kit | 7-3291 | Shoulder Strap              | 0445197880 |

## Wear & Spare Parts Torch

|  |        |                               |        |
|--|--------|-------------------------------|--------|
| Electrode, SL60                                | 9-8215 | A Size Gouging Tip            | 9-8225 |
| Cutmaster Black Series Extended Life Electrode | 9-8214 | Cutting Tip 20A               | 9-8205 |
| Start Cartridge, SL60                          | 9-8213 | Cutting Tip 30A               | 9-8206 |
| Shield Cup, SL60                               | 9-8218 | Cutting Tip 40A               | 9-8207 |
| Shield Cup Body, SL60                          | 9-8237 | Drag Cutting Shield Cap (40A) | 9-8244 |
| Shield Cap, Gouging                            | 9-8241 | Torch "O" Ring 1              | 8-3487 |
| Shield Cap Deflector                           | 9-8243 | Torch "O" Ring 2              | 8-3486 |
| Stand Off Cutting Guide                        | 9-8251 |                               |        |

# Cutmaster® 70+

Portable plasma cutting equipment



ESAB Cutmaster 70+ is the perfect combination of power and portability for hand-held plasma cutting machines. Plus means more, so we've added a user-friendly 4.3 in. TFT LCD screen and we've also upgraded the power of the machine to provide more control and flexibility so you can master any pierce and cut up to 19 mm with ease. Together with the SL60 1Torch, it all adds up to an ideal plasma cutting package.

Recommended pierce and cut capacity: 19 mm

Maximum edge cut capacity: Up to 38 mm\*

*\*Depending on material type.*

- Portable and durable with three handles and industrial housing for use in harsh environments
- Bright 4.3 in. TFT LCD display with glove-friendly adjustment knob simplifies use and provides greater control and flexibility
- Input 380 V, 3-phase power
- Comes with industrial SL60 1Torch featuring 2T/4T function, safety trigger lock, and double-tap trigger to shut off the air and conserve bottled air
- Switch between normal and grid cutting modes
- Post-cut air purge to expand consumable life
- Duty cycle: 50% @ 70 A with cutting voltage 150 V, 100% @ 50 A with cutting voltage 150 V
- Cutmaster Black Series consumables included for up to 60% longer life
- CNC functionality with pre-installed 14 pin CPC receptacle and voltage divider

## Industry

- |   |                          |
|---|--------------------------|
| ■ Industry & General Fabrication        | ■ Agricultural Equipment |
| ■ Light Fabrication                     | ■ HVAC                   |
| ■ Industrial Production & Manufacturing | ■ Repair & Maintenance   |
| ■ Automotive Bodies                     | ■ Pipeline               |
| ■ Hobbyist                              | ■ Training Schools       |



*Simple and intuitive TFT LCD panel*

Visit [esab.com](http://esab.com) for more information.

## Specifications

|  |  |
|--|--|
| Amperage Output  | 15 - 70 A, continuously adjustable                                   |
| Recommended Generator Power                                | 20 kW (or higher)  |
| Recommended Cut and Pierce Capacity                        | 19 mm*   |
| Maximum Edge Cut Capacity                                  | 38 mm*   |
| Input Voltage  | 380 VAC +/- 10%, 50/60 Hz, 3ph                                       |
| Rated Duty Cycle @ 40°C                                    | 50% @ 70 A with cutting voltage 150 V                                |
| Recommended Circuit Breaker Size (at Maximum Cut Capacity) | 32 A   |
| Amperage Draw (at Maximum Cut Capacity)                    | 21 A   |
| Input Power Cable  | 3 m, 4.0mm <sup>2</sup> without plug                                 |
| Work Lead (with Ground Clamp)                              | 3 m, 10 mm <sup>2</sup> work cable with 25 mm <sup>2</sup> connector |
| Gas Requirement  | Compressed air   |
| Operating Temperature Range                                | -10°C to + 40°C  |
| Compressed Air Pressure Requirement                        | 6.2 - 8.6 bar (90 - 125 psi) (0.62 - 0.86 Mpa)                       |
| Compressed Air Flow Requirement                            | 142 - 235 l/min  |
| SL60 Torch Duty Cycle                                      | 100% @ 60 A with 165 l/min air flow                                  |
| Torches - for use with Cutmaster 70+                       | SL60 1Torch  |
| Enclosure Class  | IP23S  |
| Certifications   | GB/T 15579.1 & CCC   |
| Dimensions L x W x H                                       | 465 x 200 x 315 mm   |
| Weight   | 16 kg  |

\*All cut capacity data contained herein is based on mild steel cuts.

## Ordering Information

|  |              |
|--|--------------|
| Cutmaster 70+ Package, 380 V 3 ph            | 0559170004CN |
| <b>Torches</b>                               |              |
| SL60 1Torch and Lead 6.1 m (20 ft) 75° Head  | 7-5204       |
| SL60 1Torch and Lead 15.2 m (50 ft) 75° Head | 7-5205       |

Delivery includes: Cutmaster 70+ power source, SL60 75° torch and lead 5 m, work lead 3 m (with ground clamp), and consumables kit.

## Options and accessories

|   |            |
|---|------------|
| Cutting Guide Kit                       | 7-7501     |
| Circle Cutting Guide Kit                | 7-3291     |
| Straight Line Cutting Guide Kit         | 7-8911     |
| Yellow Leather Lead Cover, 7.6 m(25 ft) | 0700009088 |
| Black Leather Lead Cover, 7.6 m (25 ft) | 0700009089 |
| Multi-Purpose Cart                      | 7-8888     |
| Single Stage Air Filter Kit             | 7-7507     |
| Shoulder Strap                          | 0445197880 |

## Wear & Spare Parts Torch

|  |        |
|--|--------|
| Electrode, SL60                                | 9-8215 |
| Cutmaster Black Series Extended Life Electrode | 9-8214 |
| Start Cartridge, SL60                          | 9-8213 |
| Shield Cup, SL60                               | 9-8218 |
| Shield Cup Body, SL60                          | 9-8237 |
| Shield Cap, Gouging                            | 9-8241 |
| Shield Cap Deflector                           | 9-8243 |
| A Size Gouging Tip                             | 9-8225 |
| B Size Gouging Tip                             | 9-8226 |
| Cutting Tip 20A                                | 9-8205 |
| Cutting Tip 30A                                | 9-8206 |
| Cutting Tip 40A                                | 9-8207 |
| Cutting Tip 50A                                | 9-8209 |
| Cutting Tip 70A                                | 9-8231 |
| Drag Cutting Shield Cap (40A)                  | 9-8244 |
| Drag Cutting Shield Cap (50A)                  | 9-8235 |
| Drag Cutting Shield Cap (70A)                  | 9-8236 |
| Torch "O" Ring 1                               | 8-3487 |
| Torch "O" Ring 2                               | 8-3486 |
| Stand Off Cutting Guide                        | 9-8251 |



## 1TORCH Consumables Application Guide

For SL60 and SL100 manual cutting and gouging operations.



### DRAG SHIELD CUTTING

This is an operator-friendly method of cutting while maintaining a constant standoff distance. For metal thickness greater than 6 mm, simply drag the shield cap in contact with the work piece. Use the shield cup body with the appropriate drag shield cap matching the current level being used. This method is not recommended for cutting light-gauge sheet metal.



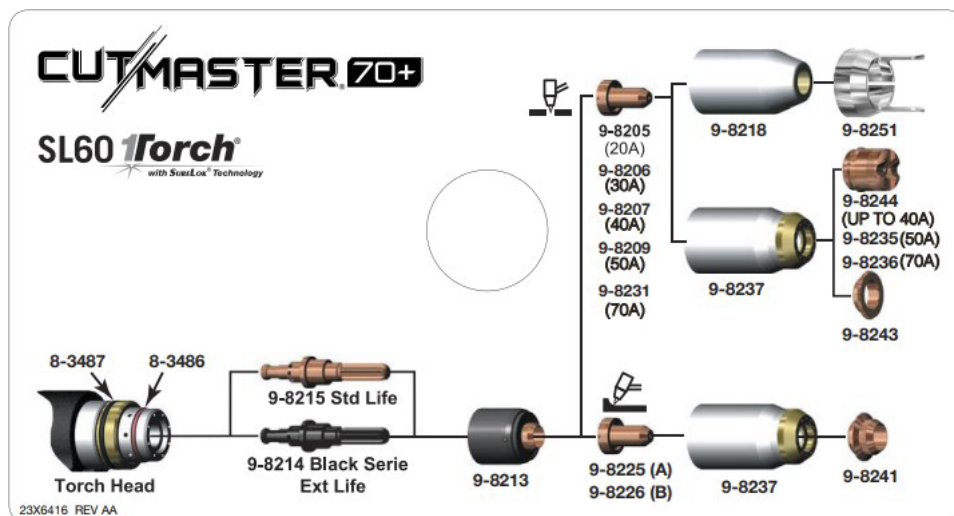
### STANDOFF CUTTING

The preferred method of cutting metal. Provides maximum visibility and accessibility. Shield cup for standoff cutting (with the torch tip 3 mm to 6 mm from the work piece). Use the shield cup body together with the deflector for extended parts life and improved resistance to reflect heat. This combination provides cutting results similar to the single-piece shield cup, as well as easy changeover to gouging or drag shield cutting.



### GOUGING

A simple method of metal removal by angling the torch to a lead angle of 35°–45° and using a gouging tip. While maintaining a constant standoff distance, this allows for only a partial penetration into the work, thus removing metal from the surface. The amount of current, travel speed, standoff distance, lead angle, and tip size will determine the amount of material removed and the profile of the gouge. You can use the shield cup body with either the gouging shield cap or the shield deflector. Also, you can use the single-piece shield cap.



## Semi-Mechanized Systems

For straight line cutting and gouging applications controlled with a simple start stop switch, ESAB MechPak provides everything you need to allow precision setup and control for many semi-automated applications. The MechPak is compatible with all Cutmaster plasmas that contain the ATC torch style quick connection.

### Ordering Information

|                     |        |
|---------------------|--------|
| MechPak, 7.6 m Kit  | 7-7725 |
| MechPak, 15.2 m Kit | 7-7750 |



A series of horizontal lines for taking notes, spanning the width of the page below the header.



A series of horizontal lines for taking notes, spanning the width of the page below the header.

# UNRIVALED SERVICE AND SUPPORT.

All ESAB products are backed by our commitment to superior customer service and support. Our skilled customer service department is prepared to quickly answer any questions, address problems, and help with the maintenance and upgrading of your machines. And our products are backed with the most comprehensive warranty in the business.

With ESAB, you can be sure you purchased a product that will meet your needs today and in the future. Product and process training is also available. Ask your ESAB sales representative or distributor for a complete ESAB solution.

For more information please visit **esab.com**.



ESAB / [esab.com](https://esab.com)



XA00299926 / APAC / English / 01-01-2024 / Note: Specifications subject to change without notice. Products may vary from those pictured.